

Mail order price list and info...

Thanks for choosing Kara-line...we are not the point and click kind of site...
So, we ask that you fill out our info page and fax that to us...so we can help
make a selection of dresses for you to choose from...

The dresses are not sized...most fit between 4-10 some styles work on size
12...depending on the style and fabric...

The dresses are produced in Portland and are made in very small
quantities...this keeps the quality excellent and makes it more original.

So we would like to ship you a few dresses to choose from, keep only what you
like and send back any you don't just love...within a timely manner of 3 days.

We ask that you only pay for the insured shipping. Both ways.

Just think of how fun it is going to be to open a box of dresses to choose from...

Prices for the dresses

Camille, Louisa, Giovanna, Margarete, & Violette, Ginger...

\$ 135 in rayon and cotton

\$ 155 in silk or wool or linen

Molly, Edi, Mae, Coco, Lela, & Juniper

\$ 165 in rayon and cotton...

\$175 in silk or wool or linen

tunic styles are \$100-\$120 depending on style and fabric

shipping cost starts @ \$12 for 3 dresses...

And get this all are hand wash cold line dry...

Please call if you have any ?503.335.3100

Fax 503.335.3101

Mail order

Name

Phone

Address

What styles do you like?

What colors do you like and dislike?

What type of prints do you want?

Our dresses are made of rayon, silk, cotton, or linen

Circle what works for you ...

All of which can be hand washed...

Note the silks are sheer...and need to be layered...

How do you describe your body type:

How would you describe your style:

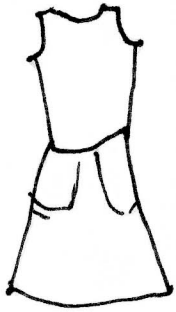
We ask that you call us with CC master card or visa. So we can charge for shipping... any returns must be made in 3 days via UPS.

Feel free to call us if you have any questions. 503.335.3100

Mail order

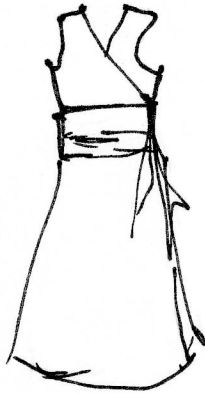
Kara-line

camille



a sweet shift
for the
slender gal

mae



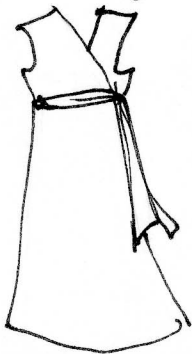
WIDE contrasting
band

louisa



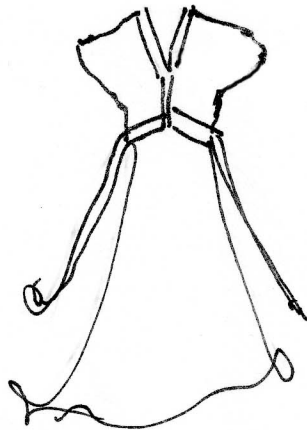
a saucy lil dress
loves a curvy gal

molly



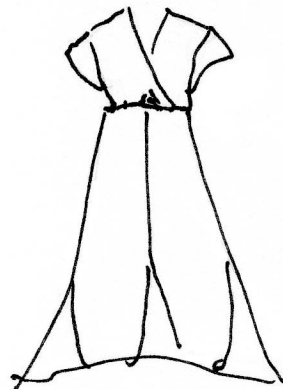
empire
wrap dress

juniper



contrasting trim
on this romantic
dress

lela



So
flattering
with pretty contrasting
on the bottom